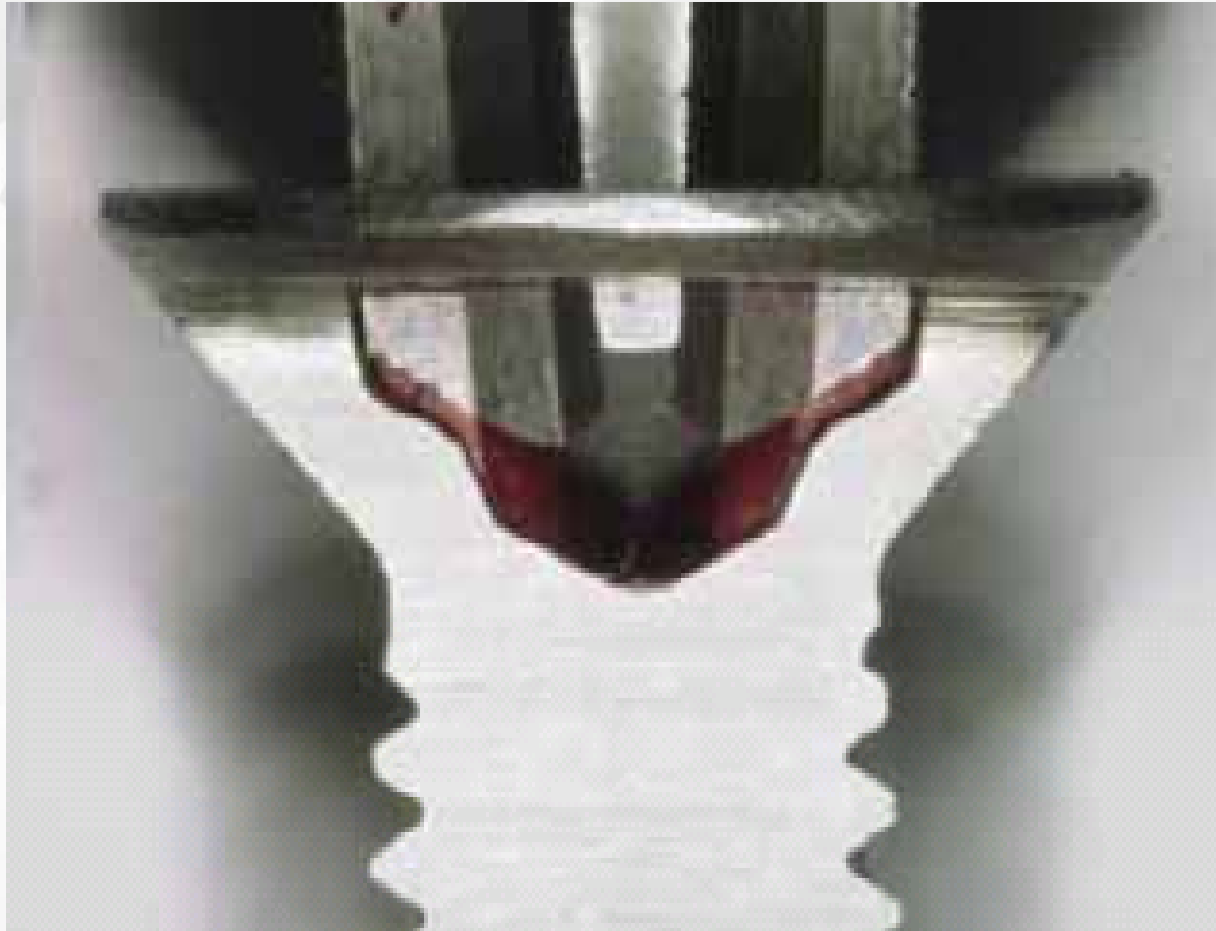


5. Totsupura® Screw



Totsupura[®] Screw

1.

2가

가 .

2. Cam-out

Cam-out

가

가 .

3.

, 가

가

4.

가

,

가

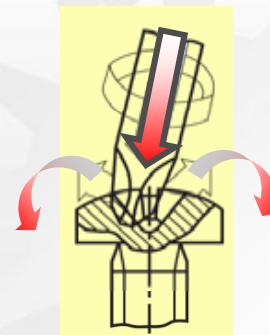
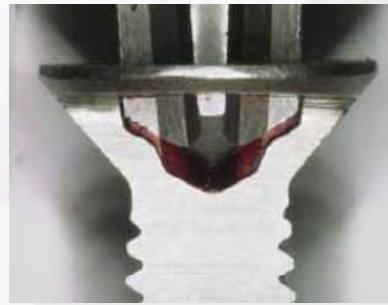
가

가 ,

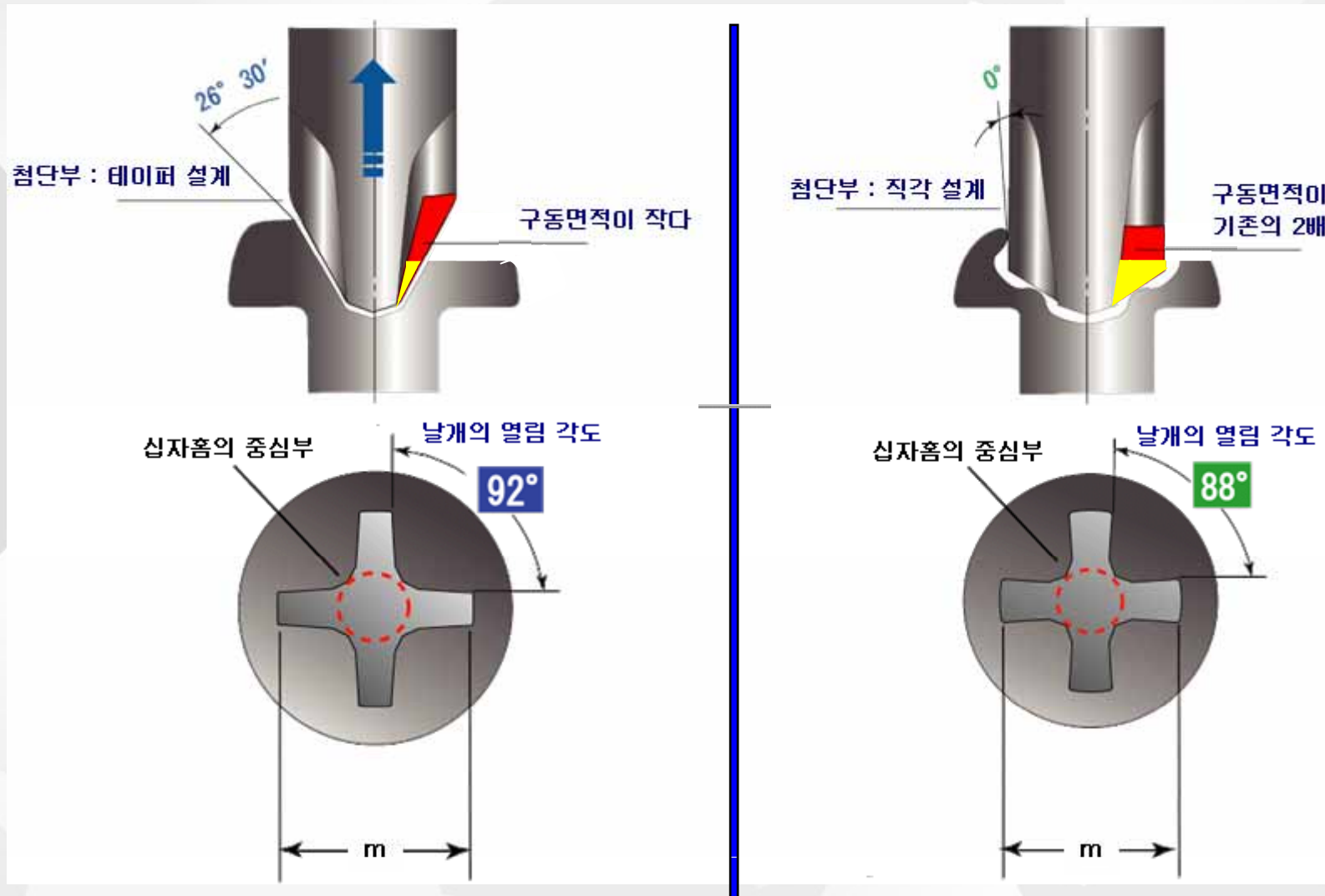
5.

가

가 .

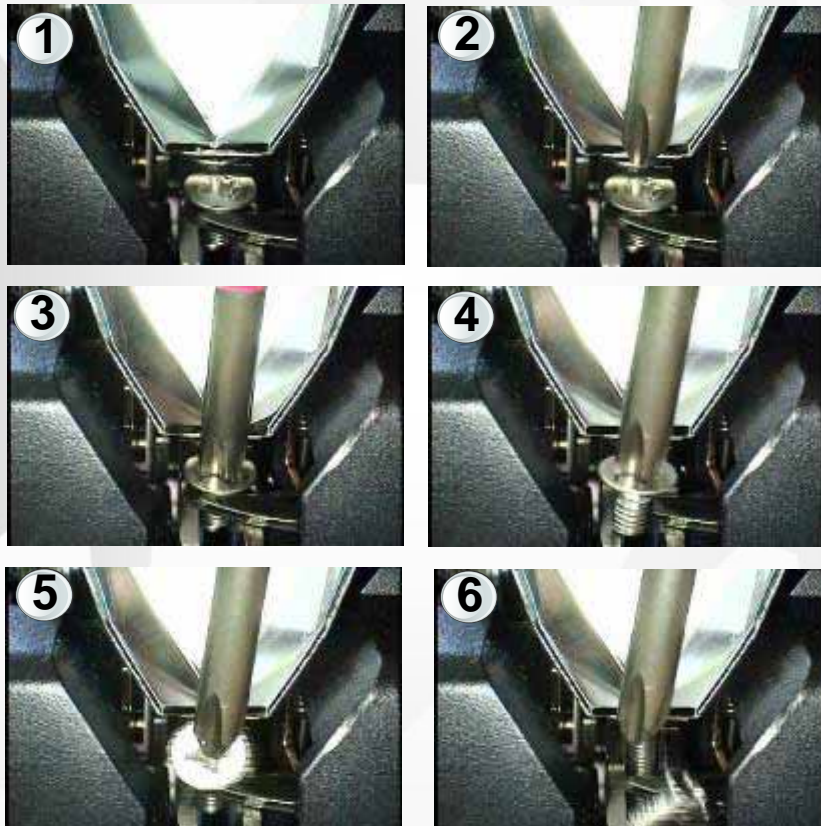


Phillips vs Totsupura[®] Screw



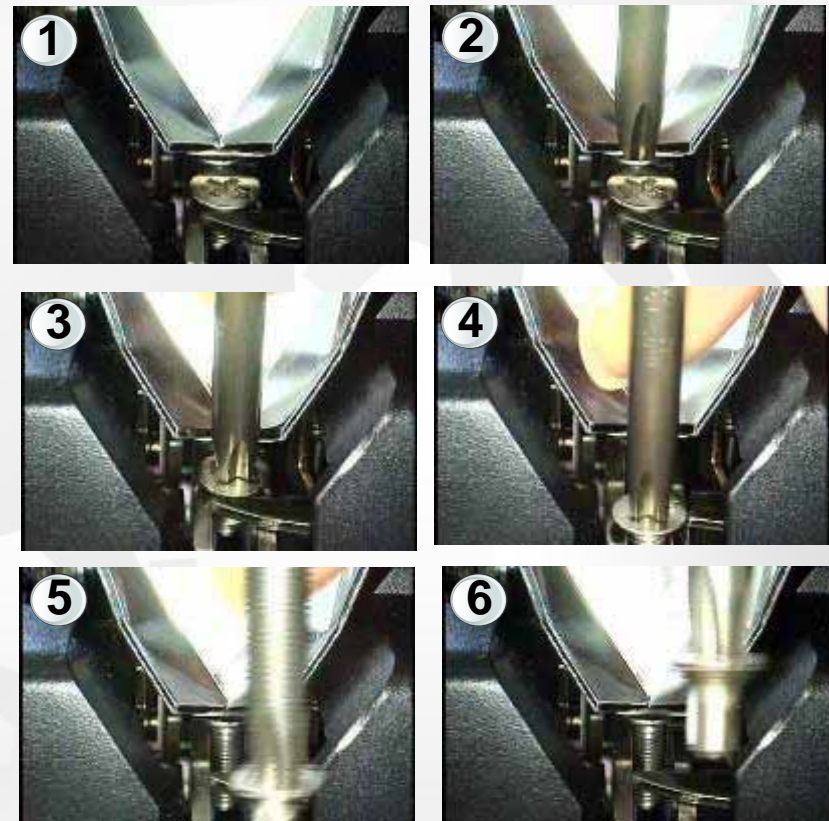
Totsupura® Screw

■ 사용"전"



*자동체결기구 사용 :
(SUS-일반 필립스 스크류 + 비트의 자중 탈락 현상)

■ 사용"후"



*자동체결기구 사용 :
(SUS-Totsupura Screw® + 비트의 놀라운 맞물림)

Totsupura[®] Screw



SUS

T-Screw[®]



“ R ”



:
SUS /
: Totsupura[®] Screw
SUS /

30%

Totsupura[®] Screw

