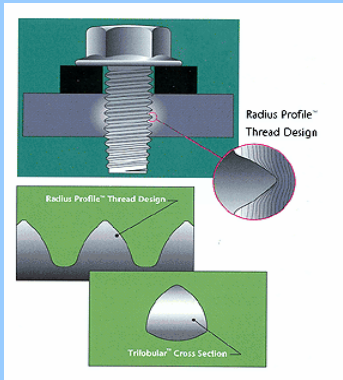




TAPTITE® Screw

(가 .)

B -
P -
S -
C -



.....
TAPTITE® 가
가



: 한국화스너 주식회사



1		
	가 + + +	가 가
2		
	가 + + +	가 가
3		
	가 + +	가 가
4		
	가 + +	가 가
5		
	+ + +	가
6		
7		

TAPTITE® Screw



1. 가

가
가

가
가



(가) (가) (가) (½) ()

2.

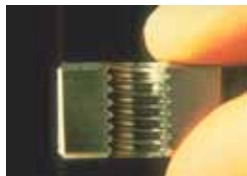
95%

(, ,)



(: 가) (: 가) (가 : , ,)

3.



(가) () (가) (HP)

4.

Prevailing Torque

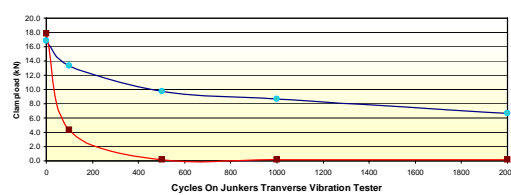
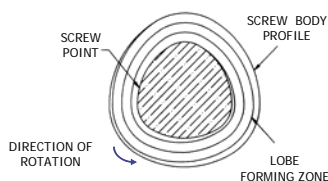
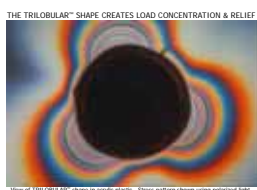
가

가

(Lobe)

Prevailing Torque

Locking screw

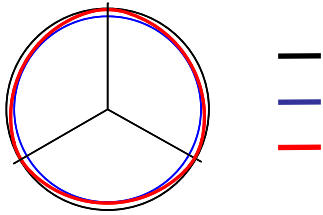


VIBRATION RESISTANCE
Clamp Load Retained (kN)
For M8-1.25 Fasteners With
Zinc, Yellow Dichromate & Wax Finish
in Cold Rolled Steel

← TAPTITE? Screw → Machine Screw

() () ()

TAPTITE® Screw



()

6H
6g



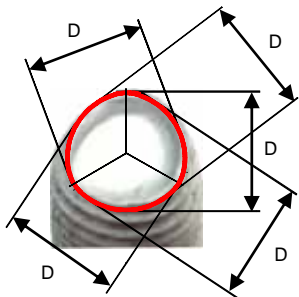
가 ()

가

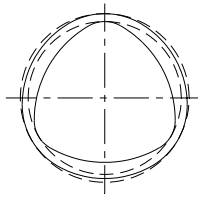
가

가

(: M6)				가	
	1.0	2	60°	가	
/ 가	1.0	2	60°	가	



()

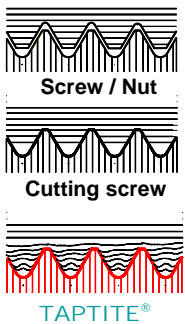


가

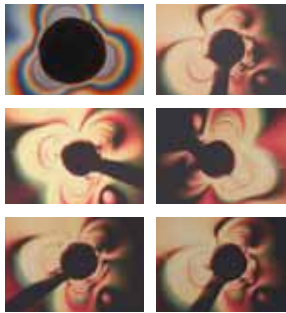
가

가

가



() (가)



가

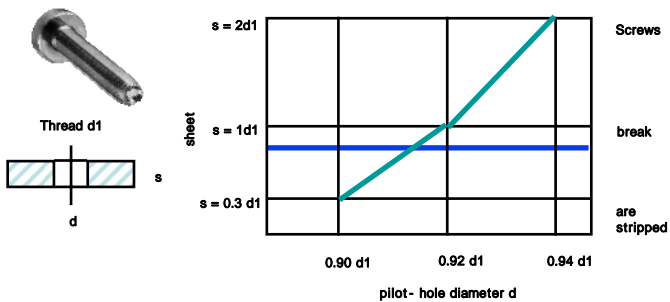
가

20%

가

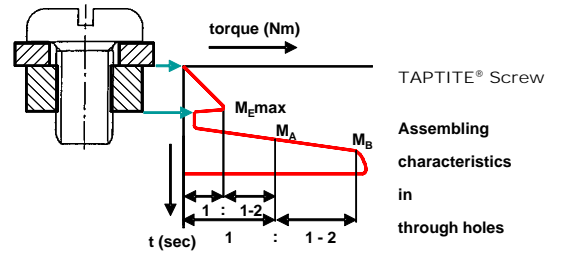
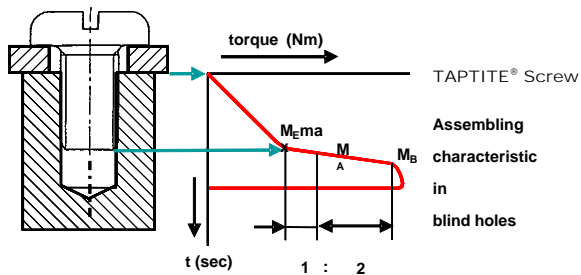
가
20%

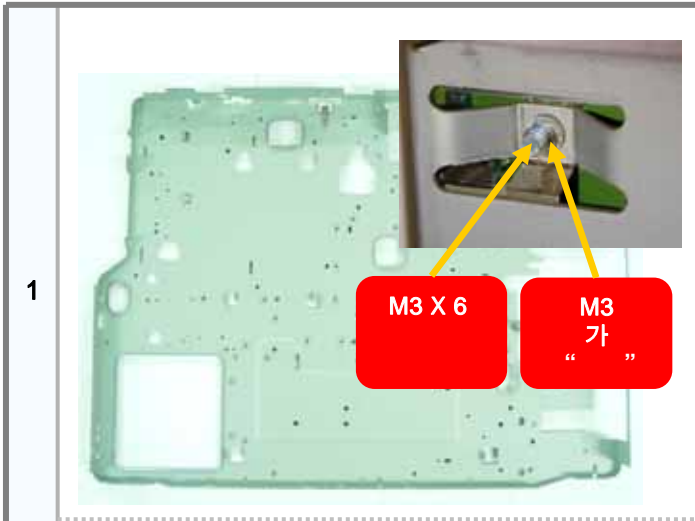
가



100%

100%





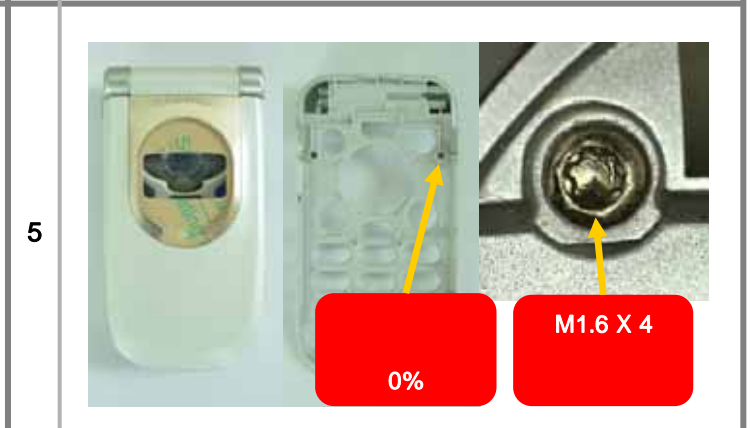
FASTITE® 2000™ :



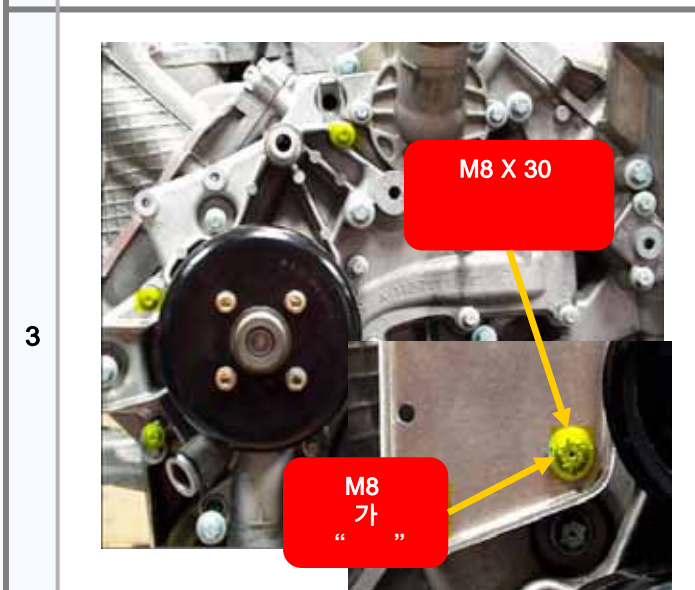
TAPTITE® 2000™ :



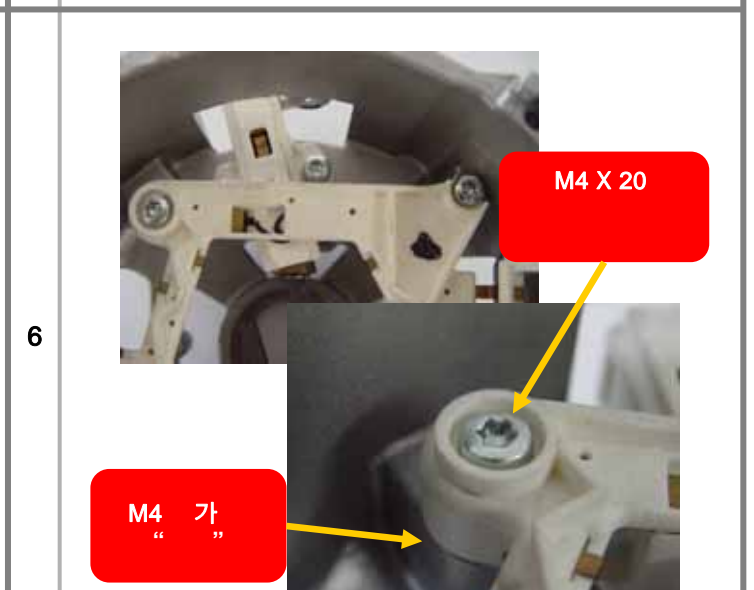
KLEERTITE® :



REMFORM® :



CORFLEX® :



TAPTITE® II :

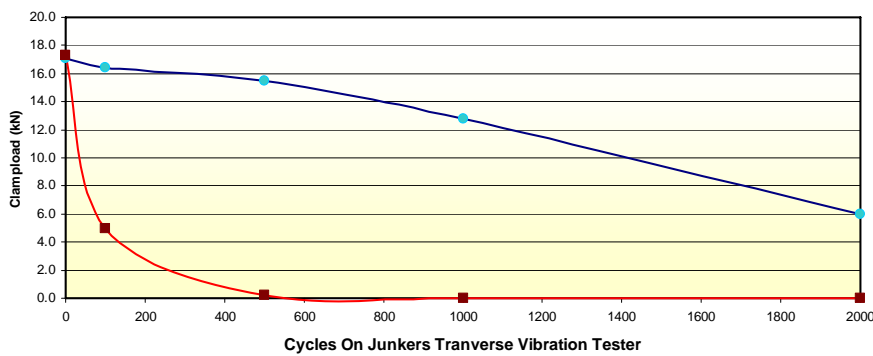


(Vibration Test Result)

According to DIN 65151



1.

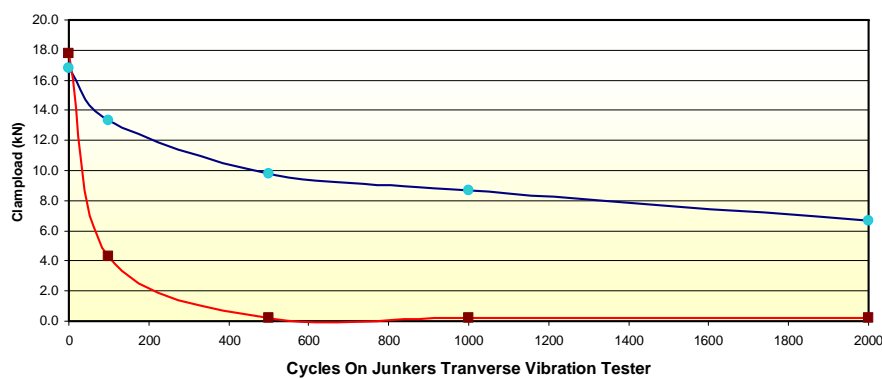


VIBRATION RESISTANCE
Clamp Load Retained (kN)
For M8-1.25 Fasteners
With Zinc, Yellow Dichromate & Wax Finish
In Aluminum (60661-T6)

—●— Trilobular™ Screw —■— Machine Screw

(400

2.



VIBRATION RESISTANCE
Clamp Load Retained (kN)
For M8-1.25 Fasteners With
Zinc, Yellow Dichromate & Wax Finish
In Cold Rolled Steel

—●— Trilobular™ Screw —■— Machine Screw

(400

50%

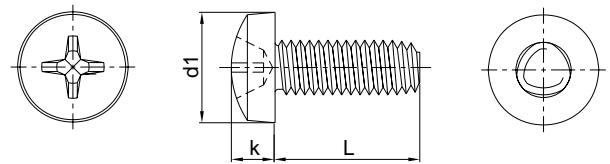
TAPTITE® Screw



30

1		2000 TAPTITE® 2000™
2		II (Two) TAPTITE® II 가
3		2000 FASTITE® 2000™ 0.8mm
4		MAGTITE® 가
5		KLEERTITE® 가
6		POWERLOK® 가
7		CORFLEX® 가 가

8		REMFORM® PT
9		TRU-START® TM Cross - Threading 가



d1	M2.5	M3	M4	M5	M6
d1 (max)	5	6	8	10	12
k	2	2.4	3.1	3.8	4.6
L	4				
	5				
	6				
	8				
	10				
	12				
	16 (15)				
	20				
	25				
30					
40					

- M6

